

Planning for People and Wildlife
Missoula, Montana

Integrating Wildlife into Land Use Planning

A PLANNING FRAMEWORK





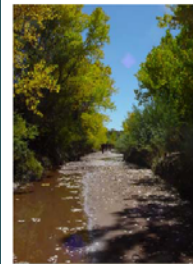
5 Land Use Planning Inclusion Points for Wildlife

1. Long Range Vision
2. Plan Making
3. Regulations
4. Development Project Review
5. Public Investments

Point 1: Long Range Vision

Answers:

- What do we treasure about where we live?
- What concerns do we have for the future?
- What do we want to change about where we live?
- What do we want our community to be like in 20 years?



VISION DRAFT, VERSION 1, MARCH 2004

The Galisteo Watershed: A Vision for the Future

Bounded by Rowe Mesa, the Estancia Basin Escarpment, and the Ortiz Mountains to the South; the Sunlit Hills, the heights of Rancho San Marcos, and the Cerrillos Hills in the North; the Galisteo Watershed sweeps downward from Thompson Peak to the Rio Grande, creating a large basin spanning three counties and encompassing 730 square miles.

This watershed (as that is how we shall refer to it) does not exist in isolation. It is continuously affected by activities in and around it. Different initiatives are competing for limited resources while (sub) urban development is expanding into the watershed at a rate of approximately 500 homes a year. The watershed is a fragile environment, able to sustain, and alternately not sustain, its residents. This historical perspective is a warning that it is critical to plan for the social, economic, and ecological future of the watershed. To undertake such planning, people who care about the Galisteo Watershed - landowners, residents, and stakeholders - came together to learn about the watershed and to say what is their shared vision.

On February 28th, 2004, an all-day meeting was graciously hosted by Vista Clara Ranch Resort and Spa. The meeting was sponsored by EarthWorks Institute, Santa Fe County Planning Division, and the Santa Fe Conservation Trust, and facilitated by The Community Store. The day was divided into two parts. In the morning people learned about the general history of human habitation in the watershed, ecological challenges that human occupation presents, and what is entailed in community watershed planning. During the second half of the day participants had the opportunity to say what it is about the watershed that they treasure, and how they picture a desirable future for the watershed.

The meeting participants asked the core group that planned the meeting to summarize the results, including a draft vision statement for the Galisteo Watershed. What follows in this report is the draft vision statement for the Galisteo Watershed.

Stop! Help! Please! As you read the following, keep in mind that it is a *DRAFT*. We have tried our best to represent what 50 people said. That is hard to do and we have

likely made mistakes. Please let us know what we have left out or misstated.

A shared vision will be the primary building block to create a plan for the watershed. After your input, we will meet with others who were not at the meeting to see what they think of the draft. We are seeking wide-spread input into the creation of the vision statement. On June 19th, 2004, a second large community meeting will convene people to outline how the detailed planning for the watershed will be done.

One last request. We want to reach people who were not at the meeting on February 28th. We have to figure out how to involve the diversity of the population within the basin - youth and residents of all communities and cultures. Help us do that. Share this report with your neighbors and friends, and tell us who else should see and respond to the vision and how we can reach them.

Your contact for sending comments is:
Marjo Curgus
phone: 989-7673
email: marjocurgus@hotmail.com



The Complete Meeting Summary

A full report of the meeting is available on the Santa Fe County website: www.santafecounty.org as a PDF file. Look for the *Galisteo Watershed Collaborative Planning* link under *News and Headlines*. You can request either a paper or digital copy from Beth Mills, County Planner, 505-995-2727. The report contains:

- The full meeting summary
- Handouts including:
 - What is a watershed
 - Examples of watershed planning
 - The Galisteo Watershed Restoration Action Strategy Draft
 - Wet and dry cycles in NM
- A historical timeline of the Galisteo
- A participant list

Point 2: Plan Making..... The Minimum

Preserve and enhance critical wildlife habitat and river and stream corridors throughout the county.

Point 2: Plan Making...Better

The County's wildlife and scenic resources are a local and national treasure, and, therefore, the community recognizes a stewardship responsibility for their protection. Future development in Teton County will take place in this context. Therefore the County will:

- Preserve and protect wildlife habitat, including continuous migration corridors.*
- Protect environmentally sensitive and physically unsafe areas from development.*
- Encourage restoration of environmentally degraded areas.*

Point 2: Plan Making

Teton County, WY Wildlife Goals

1. **Crucial winter range** *for elk, moose, and mule deer.*
2. **Migration routes and corridors** *for ungulates.*
3. **Nesting areas** *for bald eagles and endangered raptors .*
4. **Spawning areas** *for Snake River cutthroat trout.*
5. **Major riparian corridors** *such as the Snake & Gros Venture which contain a multitude of habitat variables.*

Point 3: Regulatory Framework Wildlife Development Standards



Vegetation Protection
Avoidance
Use limitations
Pet restrictions
Lighting (dark sky)
Timing restrictions
Fencing types
Clustering
Conflict avoidance

3. Regulatory Framework: Teton County, WY N.R.O

- EA before application
- Pre application meetings
- Habitat definitions
- Habitat priority rankings
- Species habitat priorities
- Avoidance mitigation
- Habitat enhancement (on and off site) 2 to 1 ratio for acreage

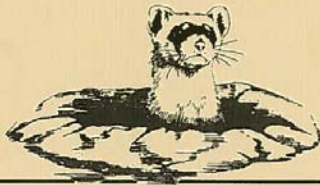
Point 3: Regulatory Framework Teton County, WY N.R.O

**TETON COUNTY
WILDLIFE-HABITAT ASSESSMENT
FINAL REPORT**

Biota

RESEARCH AND CONSULTING, INC.

P.O. Box 540 2075 N. Rendezvous Drive (307) 733-4216
Wilson, Wyoming 83014



EN.wh16

ARTICLE III. NATURAL SCENIC, AGRICULTURAL
AND TOURISM RESOURCES PROTECTION

**ARTICLE III
NATURAL, SCENIC, AGRICULTURAL, AND TOURISM
RESOURCES PROTECTION**

TABLE OF CONTENTS

| | <u>PAGE</u> |
|---|-------------|
| DIVISION 3000. FINDINGS, PURPOSE, AND OVERVIEW | III-1 |
| SECTION 3010. FINDINGS..... | III-1 |
| SECTION 3020. PURPOSE..... | III-1 |
| SECTION 3030. OVERVIEW | III-2 |
| DIVISION 3100. ENVIRONMENTAL ANALYSIS | III-4 |
| SECTION 3110. PURPOSE..... | III-4 |
| SECTION 3120. APPLICABILITY..... | III-4 |
| SECTION 3130. EXEMPTIONS..... | III-4 |
| SECTION 3140. CONTENT OF ENVIRONMENTAL ANALYSIS (EA) | III-5 |
| SECTION 3150. PROCEDURE (AMD 07-0002) (AMD 08-0007) | III-8 |
| DIVISION 3200. NATURAL RESOURCES PROTECTION AND NATURAL RESOURCES OVERLAY (NRO) DISTRICT | III-15 |
| SECTION 3210. FINDINGS AND PURPOSE FOR RESOURCE PROTECTION OF VEGETATIVE COVER TYPES, WATERBODIES, FLOODPLAINS, AND WETLANDS..... | III-15 |
| SECTION 3211. VEGETATIVE COVER TYPES..... | III-15 |
| SECTION 3220. WATERBODIES, TEN (10) YEAR FLOODPLAINS, AND WETLANDS | III-19 |
| SECTION 3230. WILD ANIMAL FEEDING..... | III-23 |
| SECTION 3240. FINDINGS AND PURPOSE OF NATURAL RESOURCES OVERLAY (NRO) DISTRICT | III-25 |
| SECTION 3250. ESTABLISHMENT OF NATURAL RESOURCES OVERLAY (NRO) DISTRICT | III-31 |
| SECTION 3260. APPLICABILITY..... | III-34 |
| SECTION 3270. STANDARDS FOR DEVELOPMENT IN THE NRO DISTRICT | III-34 |

3. Regulations: Teton County NRO

- b. **Elk migrate between summer range and winter range.** Elk are known as grazers and rely primarily on grasses and some shrubs for forage. Because of their diet and the climate in Teton County, elk are migratory animals, moving between summer ranges and winter habitat.

B. Elk

- 1. **Crucial elk migration routes.** No development shall occur within crucial elk migration routes, unless the developer can demonstrate that the development can be located in such a way that it will not detrimentally effect the ability of elk to migrate from their summer ranges to their crucial winter ranges.

Point 4: Development Project Review Gunnison County Sage Grouse

SECTION 11-106: PROTECTION OF WILDLIFE HABITAT AREAS

A. PURPOSE. The natural and scenic resources in Gunnison County, including wildlife, are essential components of the County's economic base and help to establish the rural character of the County. Tourists visit and recreate in Gunnison County because of the quality of these natural resources, including the abundance of wildlife species found in the area. These resources are also a basic element of the quality of life for residents of Gunnison County. The standards in this Section are intended to protect sensitive wildlife habitat areas, to protect biological field research, and to ensure that wildlife remains a part of Gunnison County's natural environment for generations to come. In addition, this Section is designed to:

- 1. SUSTAIN AND ENHANCE EXISTING POPULATIONS OF GUNNISON SAGE-GROUSE.** Sustain and enhance survival of the Gunnison Sage-grouse.
- 2. PRECLUDE THE NEED TO LIST, OR MINIMIZE THE IMPACT OF LISTING OF GUNNISON SAGE-GROUSE AS CANDIDATE SPECIES.** Help implement an effective strategy and programs that will preclude the need to list, or minimize the impact of listing of the Gunnison Sage-grouse as a candidate for threatened or endangered status pursuant to the *Endangered Species Act of 1973*, or at a minimum, demonstrate the intent of Gunnison County to preserve and protect habitat that will lessen the impact if listing does occur.



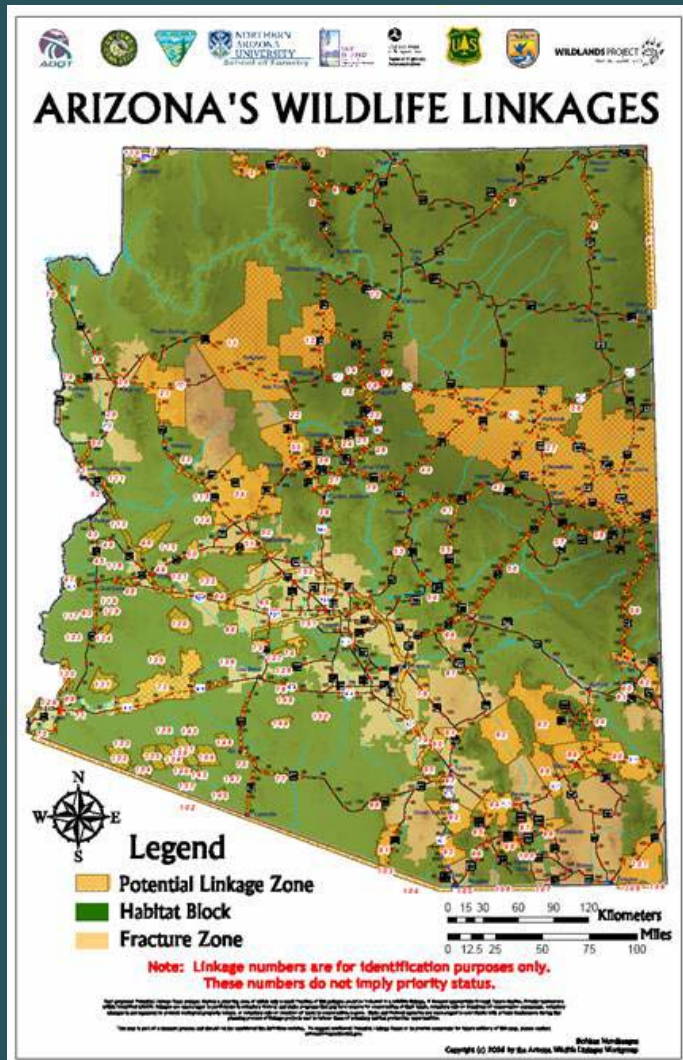
Gunnison County Planning Department, Gunnison, CO

Request for Pre-Application Conference
Concerning Potential Development in Gunnison
County Sage-grouse Occupied Habitat

DATE RECEIVED: ___/___/___

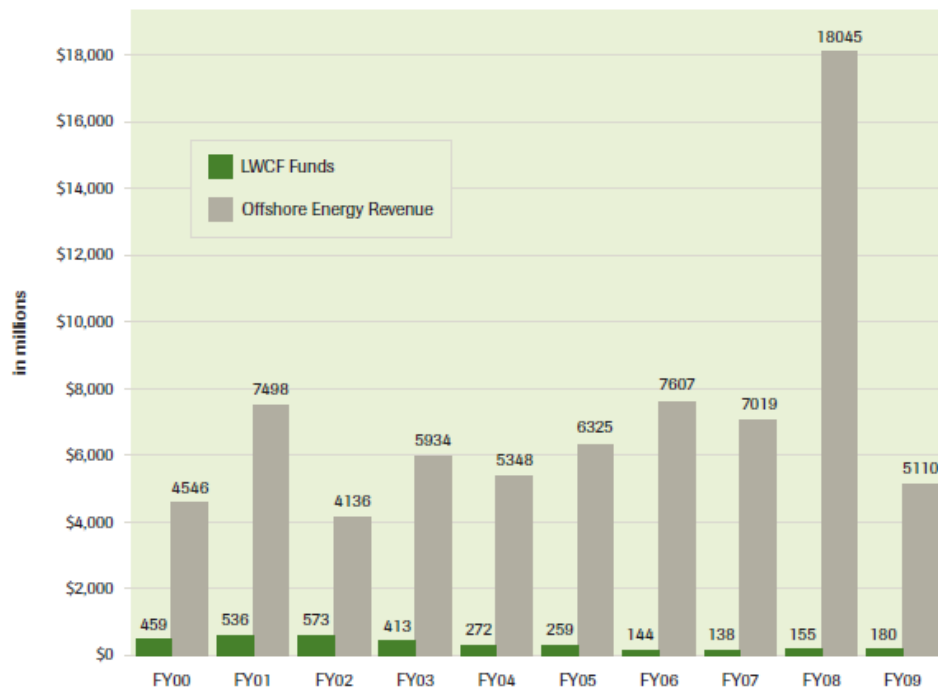
Point 5: Public Investments Transportation

The People's Way US 93



Public Investments Energy Impact Mitigation

LWCF Funds and Offshore Energy Revenue FY00-FY09



Public Investments Land Acquisitions



Nolina Peak Conservation Campaign to Preserve 639 Acres near Joshua Tree

Public Investments: Stewardship & Restoration



Careless Creek Watershed Project

THE SONORAN INSTITUTE

Marjo Curgus

Director, Training and Community Leadership

719-207-4563

mcurgus@sonoraninstitute.org

