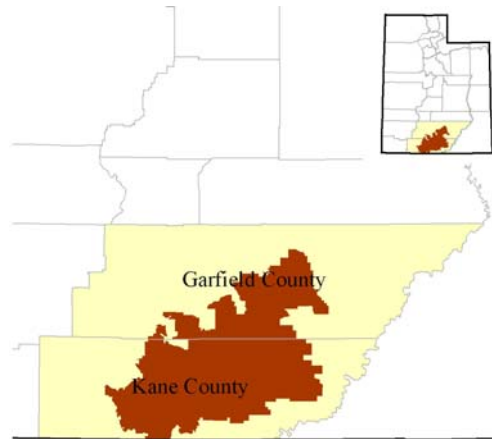


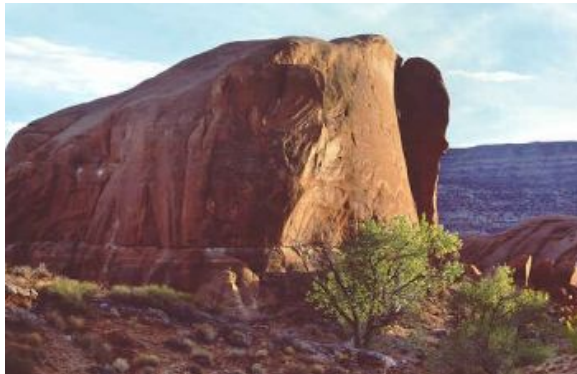
# PRESERVING CANYON COUNTRY

## GRAND STAIRCASE-ESCALANTE NATIONAL MONUMENT

*Designated:* 1996  
*Location:* Southern Utah  
*Size:* 1.7 million acres  
*Counties:* Garfield (Rural without air service, 17.71 percent of county land base)  
 Kane (Rural without air service, 49.14 percent of county land base)



Grand Staircase-Escalante National Monument sets aside some of the most remote land in the continental U.S., including approximately 900,000 acres of Wilderness Study Areas within its 1.7 million acres. The Monument encompasses dramatic mesas and cliffs, deep valleys and narrow slot canyons, and broad expanses of Navajo Sandstone that includes natural bridges. It is a biologically significant



Sooner Rock in Grand Staircase-Escalante National Monument. Jerry Sintz, Bureau of Land Management

area, and has been for eons. Fossils of dinosaurs and other ancient life-forms abound here, as do present-day populations of mammals and birds.

The area also has at least an 8,000-year history of human habitation, reflected among the more than 18,000 archeological sites left by Archaic, Anasazi, Fremont, Shoshone, Navajo, Apache, and Pueblo peoples. The Southern Paiutes consider this area to be their tribal homeland. Spanish explorers and Mormon settlers came later, as did John Wesley Powell, who discovered and named the Escalante River in 1872.

### *Before and After Designation*

Since Grand Staircase-Escalante National Monument was designated in 1996, the economies of Garfield and Kane counties have grown by all four indicators analyzed by this study. The Monument's designation in 1996 seems to have had little effect on overall trends, with the exception that per capita income loss has reversed in Garfield County.

TABLE 1 Socioeconomic indicators in Garfield County, Utah

	1980	1996 (year designated)	2002	% Change 1980 - 2002	% Change 1996 - 2002
Personal income (millions)	79	74	92	16	25
Population	3,697	4,111	4,603	25	12
Per capita personal income	21,380	17,969	19,999	-6	11
Total employment	2,330	2,397	3,008	29	25

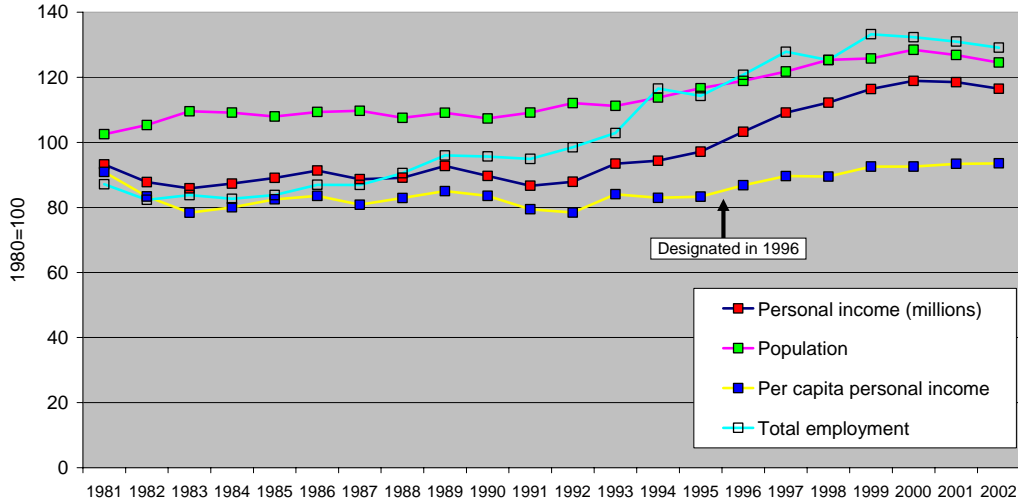


FIGURE 1. Growth of key economic indicators in Garfield County, Utah

TABLE 2 Socioeconomic indicators in Kane County, Utah

	1980	1996 (year designated)	2002	% Change 1980 - 2002	% Change 1996 - 2002
Personal income (millions)	71	104	144	102	38
Population	4,038	5,605	6,018	49	7
Per capita personal income	17,584	18,604	23,885	36	28
Total employment	1,555	2,621	3,826	146	46

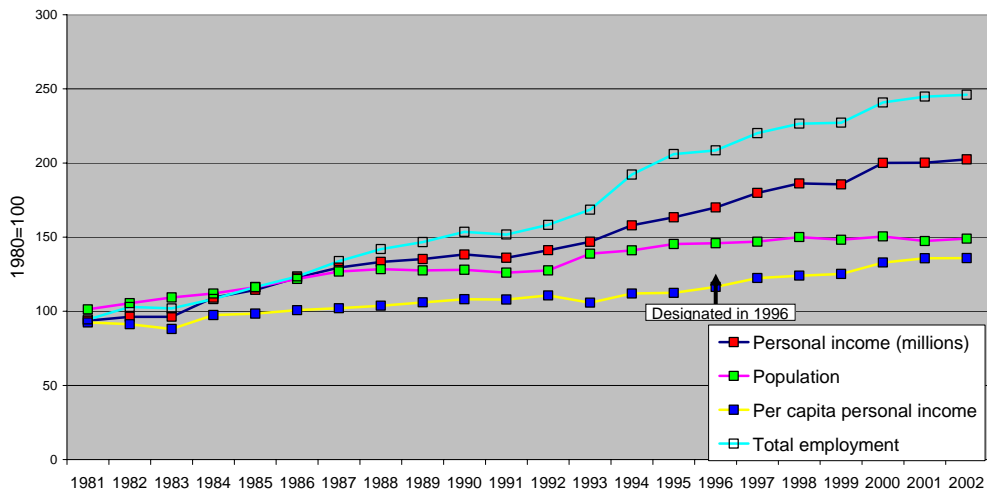


FIGURE 2. Growth of key economic indicators in Kane County, Utah

### *Economic Change in Garfield and Kane Counties*

Data from the U.S. Census Bureau and the Bureau of Labor Statistics indicates that both counties are ahead of the median U.S. county by several indicators:

- faster population growth,
- faster employment growth,
- faster personal income growth, and
- a higher education rate.

Positive trends in personal income from a range of sources were underway in these counties before the Monument was designated in 1996, and have continued on much the same trajectory, as Figures 2 and 3 illustrate.

As Figure 3 shows, growth in personal income from Garfield County is largely from gains in three sectors: Services, Non-Labor, and Government. Non-Labor in particular has grown steadily since 1980, such that by 2000, almost three out of every four new dollars of personal income are from retirement, transfer payments, investments, and other non-labor sources. This income sector is often brought by new residents who have chosen to resettle based on quality of life factors, such as protected public lands. The Services sector has doubled, more than making up for losses in Mining, Manufacturing, and Agriculture. Non-Labor and Services combined now account for more than three-fourths of personal income in Garfield County.

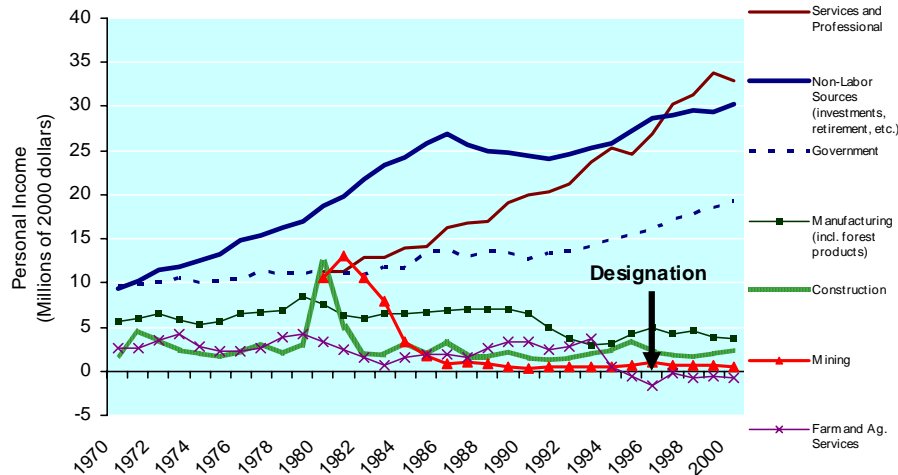


FIGURE 3. Personal income by major sector in Garfield County, Utah

Source: U.S. Department of Commerce. 2001. Regional Economic Information System. Bureau of Economic Analysis, Washington, DC. Note: some historical data, prior to 1980, are missing due to data restrictions imposed by the U.S. Department of Commerce.

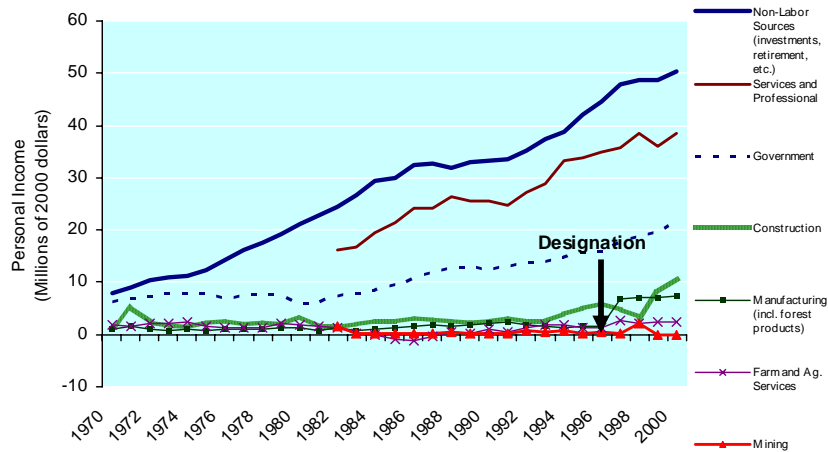


FIGURE 4. Personal income by major sector in Kane County, Utah.

Source: U.S. Department of Commerce. 2001. Regional Economic Information System. Bureau of Economic Analysis, Washington, DC. Note: some historical data, prior to 1982, are missing due to data restrictions imposed by the U.S. Department of Commerce.

The economy of Kane County has a similar composition and has experienced similar changes over the past 30 years. Designation has made little difference in existing trends. More than a third of net growth in personal income has come from Non-Labor sources, and Services income has made a similar contribution to the total. Government, Construction, Manufacturing, and Agriculture have also increased.

**Conclusion**

Garfield and Kane counties are continuing to increase in personal income in a range of sectors, in similar patterns before and after designation. The increases in total personal income, population, per capita income, and total employment they were experiencing before designation are likely to continue.

