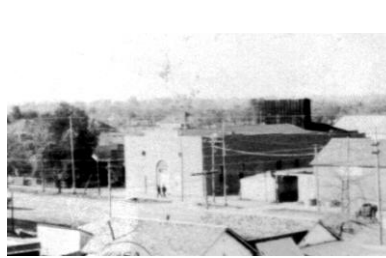




---

# Historic Preservation in your community



- After 35 years of Architectural practice and traveling throughout the United States, I have collected a strong library of historic photos of communities and their architectural treasures. Many of these cities and towns were not recognizing the wonderful resource that they have and how it could become an economic stimulus for their community.

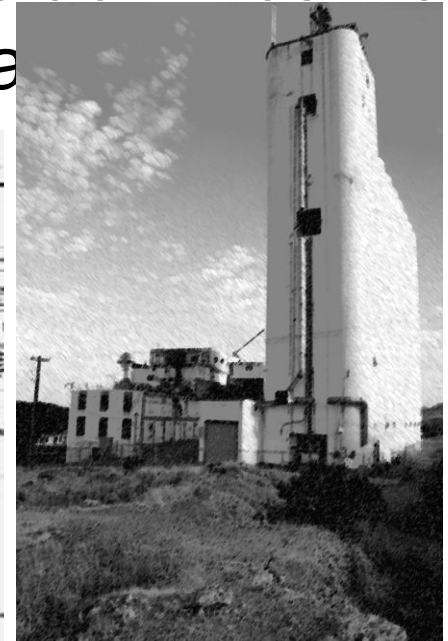
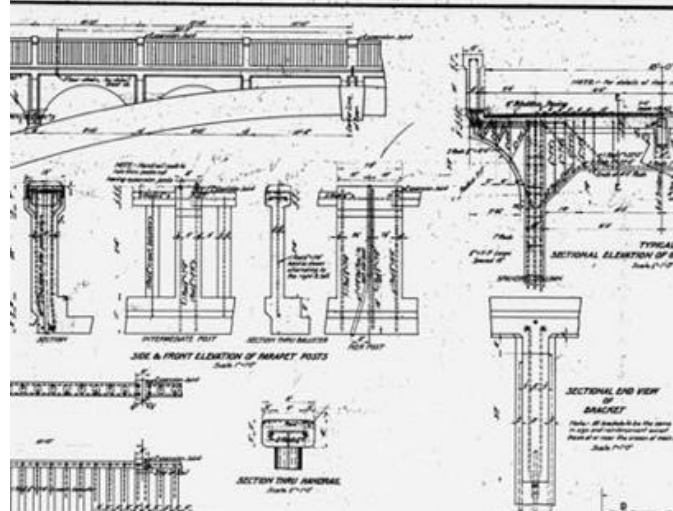


- With this information I have created a series of posters that celebrates the architecture in these small towns. I begin with a series of photos of the historic downtowns or streets, and sometimes individual buildings, that exhibit an example of the architectural styles or periods that were prevalent in the community over a certain span of time. These building examples also document a transition or timeline for the development and prosperity of the community.



- It was also important to understand a happening that may have gone with the architecture that would provide an interesting local story that would help to identify a period or a historic event that took place in the community. These are published as part of the poster to link the event to the architecture. Events provide information that help identify the architecture and dates in many cases.

- The posters have become a method of preservation for not only a town or cities architecture but also the historic activities that have made them so unique as a  
ITS GOOD





- Author and economist, Donovan Rypkema has published a great book on this subject “*The Economics of Historic Preservation: A Community Leader's Guide.*”
- I recommend all communities provide copies to their leadership.

- The process begins with a photo trip.



- And continues:





## MAIN STREET 2002

© RON PETERS 2002

# JEROME ARIZONA

While mining operations began in 1883, the town of Jerome was built on Cleopatra Hill in Northern Arizona around 1895. The town went from a peak population of 15,000 in the early 1920s, to less than 50 in the 1950s. In the 1970s and 1980s, Jerome was returned to life by an active artist community and a group of dedicated local historic preservationists. Some of its earliest structures line main street and give one a glimpse of what early Jerome was like at the turn of the 19th. century. Jerome became a National Historic Landmark in 1976.



© ron.peters 2002

# *Historic Streetscapes*

PLLC



© RON PETERS 2002

**MAIN STREET**

**JEROME ARIZONA**

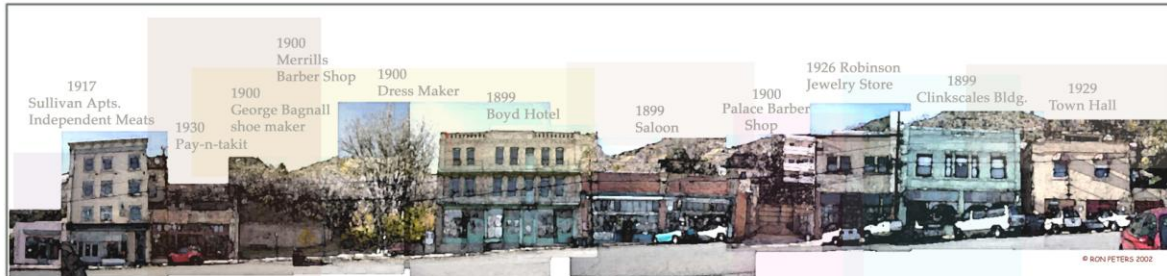


- Many communities have historic preservation departments or societies that can help you begin the historic research necessary to identify those areas or buildings in your communities that have played an important part in making “history”.

© ron.peters 2002

# Historic Streetscapes

PLLC



MAIN STREET

## JEROME ARIZONA

While mining operations began in 1883, the town of Jerome was built on Cleopatra Hill in Northern Arizona around 1895. The town went from a peak population of 15,000 in the early 1920s to fewer than 50 in the 1950s. In the 1970s and 1980s, Jerome was returned to life by an active artist community and a group of dedicated local historic preservationists. Some of its earliest structures line main street and give a glimpse of what early Jerome was like at the turn of the 19th century. Jerome became a National Historic Landmark in 1966.

the

the HISTORIC STREETSCAPES SERIES no. 101